

# WYOMING PIPELINE CORRIDOR INITIATIVE

Wyoming Pipeline Authority

Public Meeting

Matt Fry

June 16, 2016

# OVERVIEW

- BACKGROUND
- PROJECT DESCRIPTION
- CHALLENGES
- PROCESS
- STATUS AND NEXT STEPS

# BACKGROUND

- BLM BOUNDARIES



- ECONOMIC OPPORTUNITIES

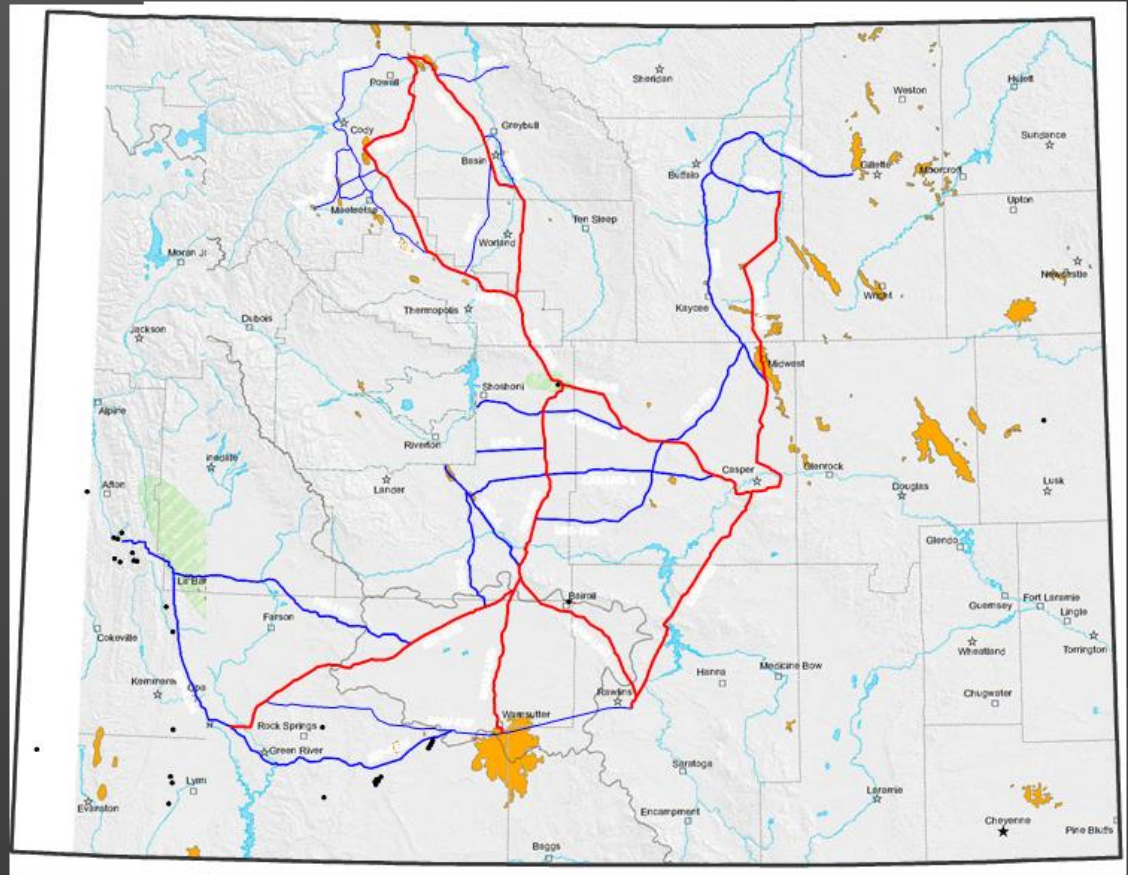


- REDUCED RESOURCE IMPACTS



# PROJECT DESCRIPTION

- GOAL IS TO FACILITATE DEVELOPMENT AND MINIMIZE RESOURCE IMPACTS
- CONNECT SOURCES OF CO<sub>2</sub> AND COMPATIBLE OIL FIELDS
- TRUNK AND LATERAL CORRIDORS
- ANALYZE TO CARRY CO<sub>2</sub> AND PRODUCTS
- ANALYZE FOR BROADBAND INFRASTRUCTURE
- EIS WILL AMEND RMPs AND ESTABLISH DEVELOPMENT ZONES



# CHALLENGES

- TIMING
  - BLM RMP AMENDMENTS
  - REDUCED OIL PRICES



- OTHER RESOURCES



# PROCESS

- FOLLOWING FERC MODEL
- DEVELOPED A POD
- MODIFIED ROUTES TO ACCOUNT FOR CONFLICTS
- BID AND HIRED RESOURCE CONSULTANTS
- PREPARE RESOURCE REPORTS
- DEVELOP EIS
- PROMOTE DEVELOPMENT WITHIN CORRIDORS

# STATUS

- CONSULTANTS ARE GATHERING DATA AND PREPARING TO WRITE RESOURCE REPORTS

# NEXT STEPS

- CONTINUE TO COORDINATE WITH BLM
- REVIEW AND FINALIZE RESOURCE REPORTS
- MOVE INTO DEVELOPMENT OF AN EIS

QUESTIONS ?