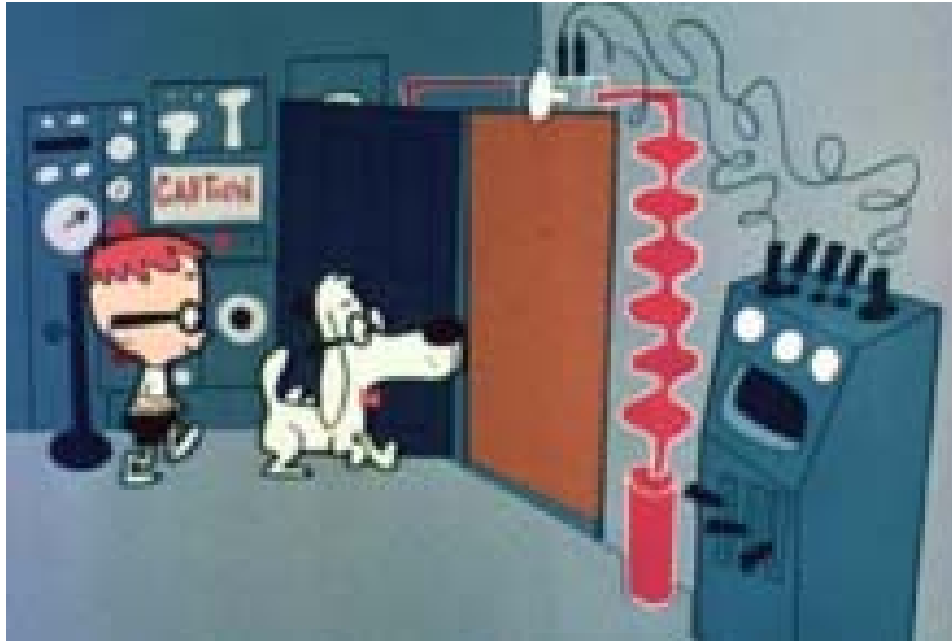
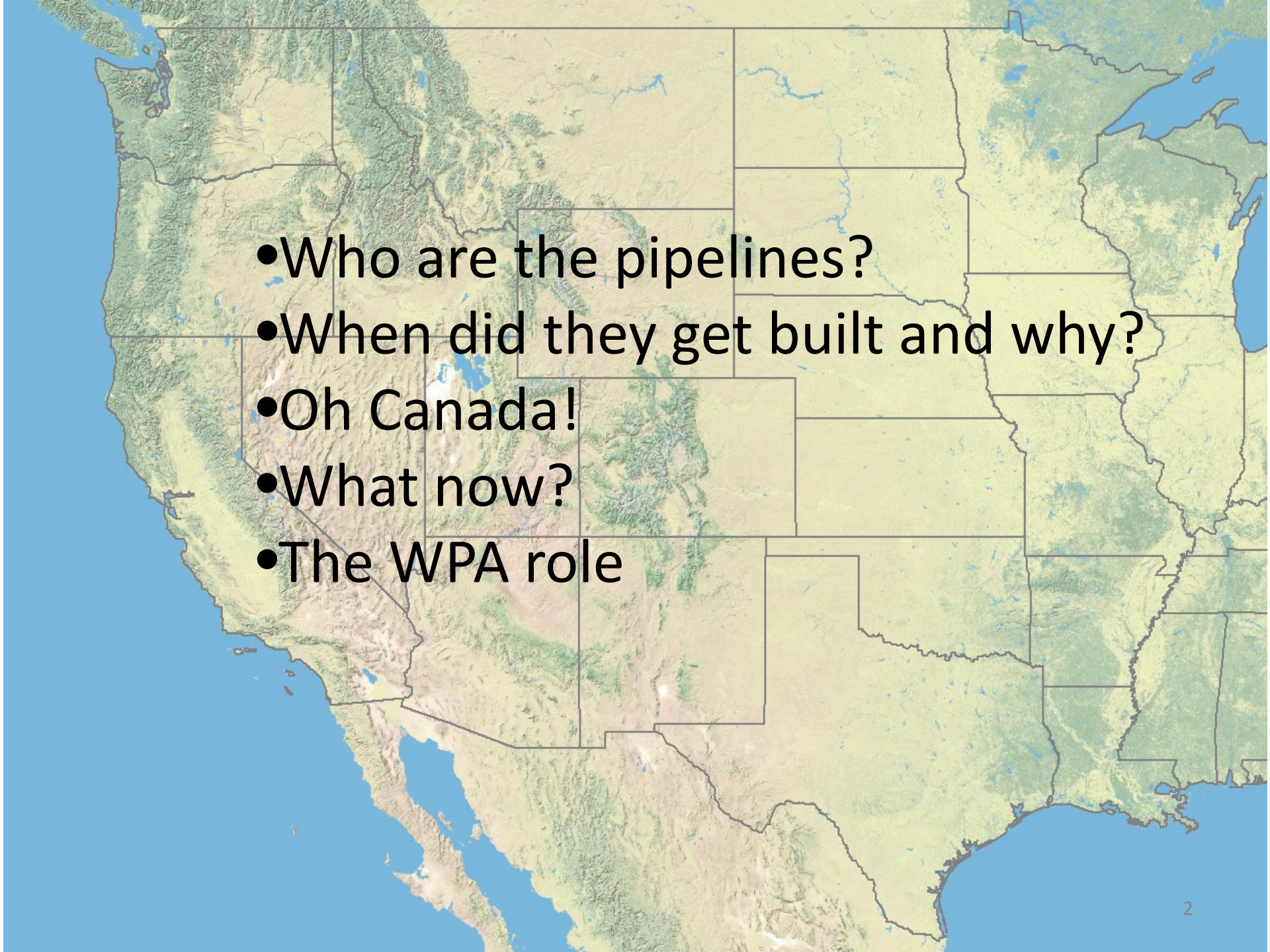


Peabody's Improbable History – Rocky and Bullwinkle Show
- The WABAC Machine -



A trip through the history of pipeline expansion in the Rockies



- 
- Who are the pipelines?
 - When did they get built and why?
 - Oh Canada!
 - What now?
 - The WPA role



~~Mountain Fuel Supply Company~~

Questar Pipeline Company

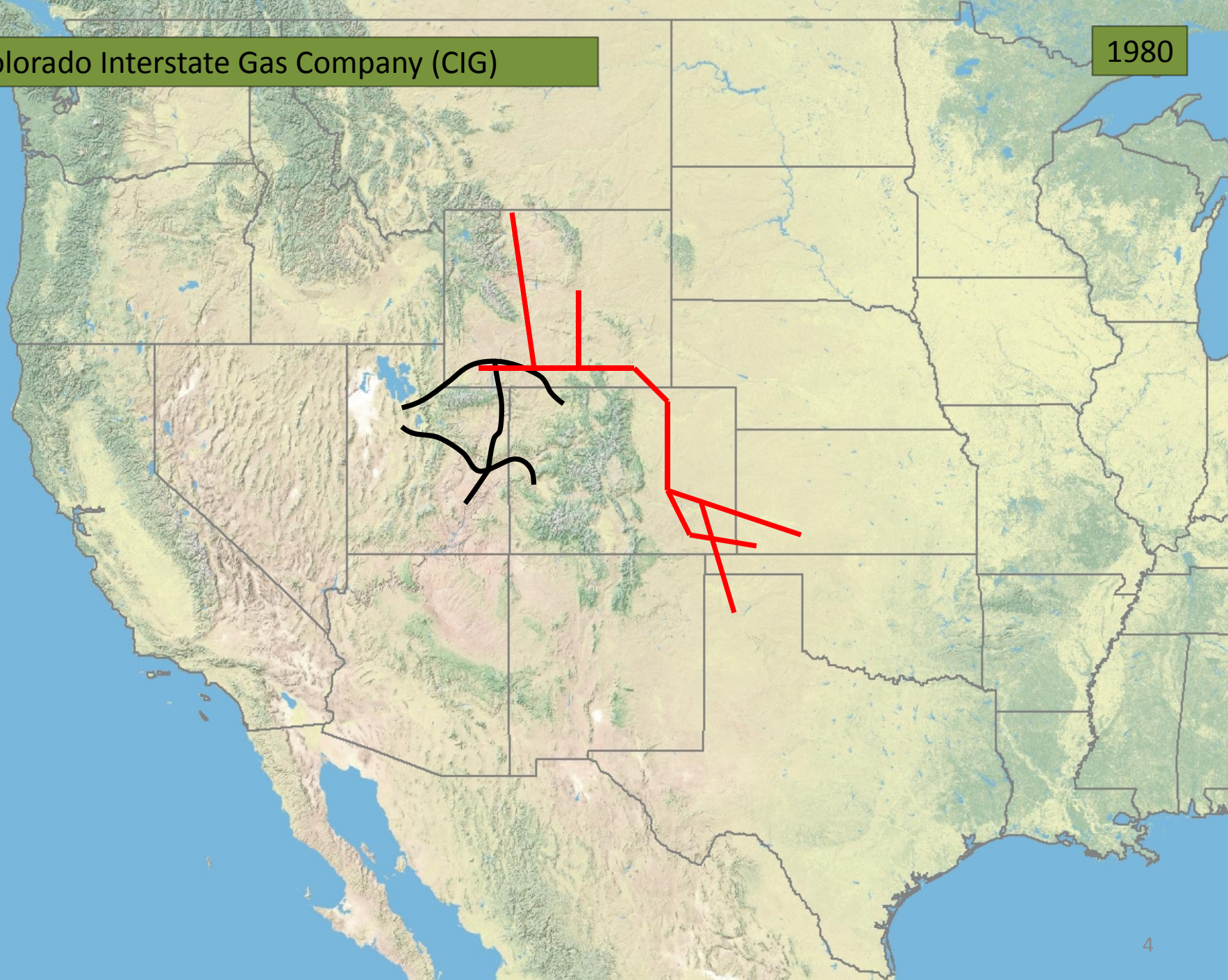
1980





Colorado Interstate Gas Company (CIG)

1980

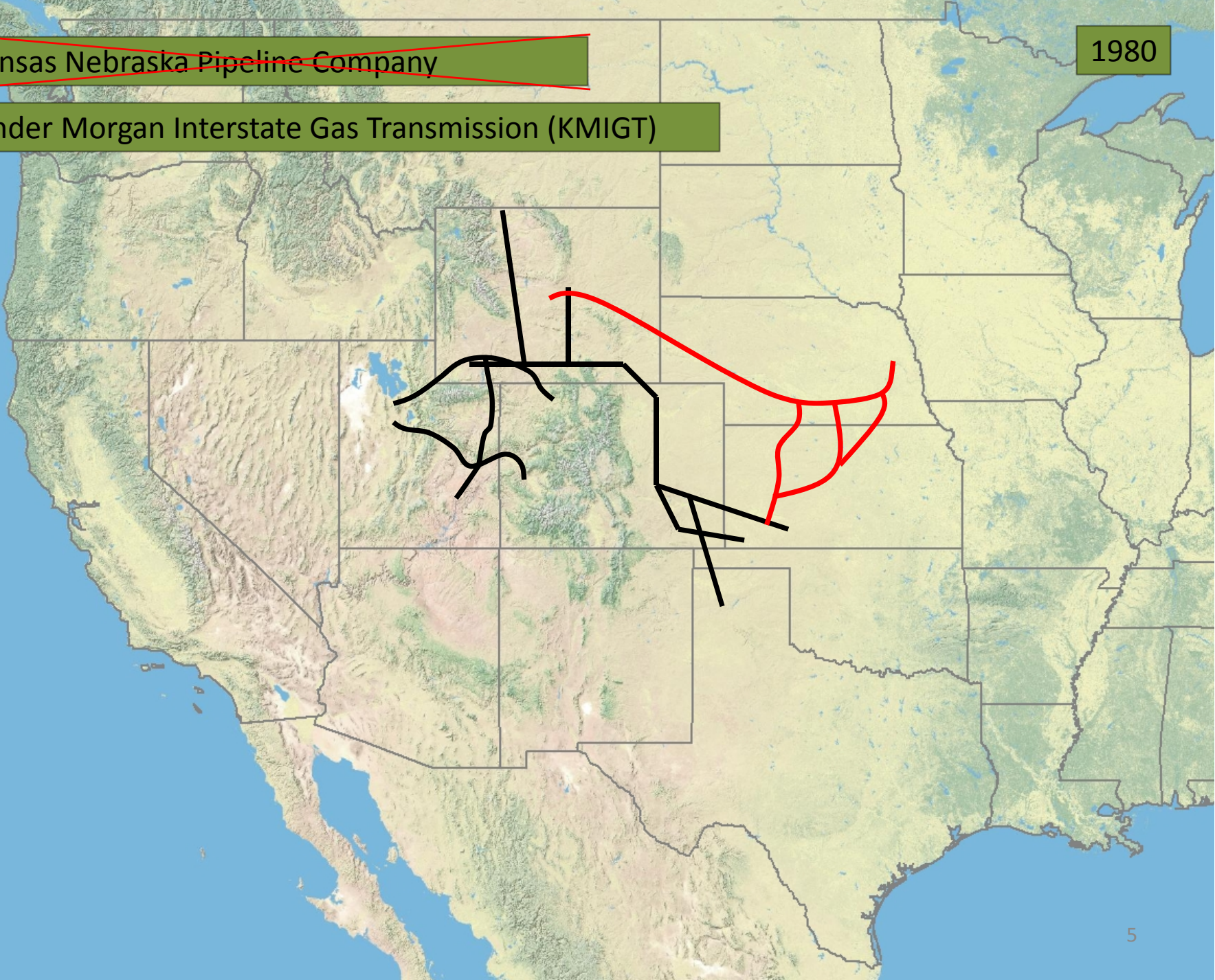




~~Kansas Nebraska Pipeline Company~~

1980

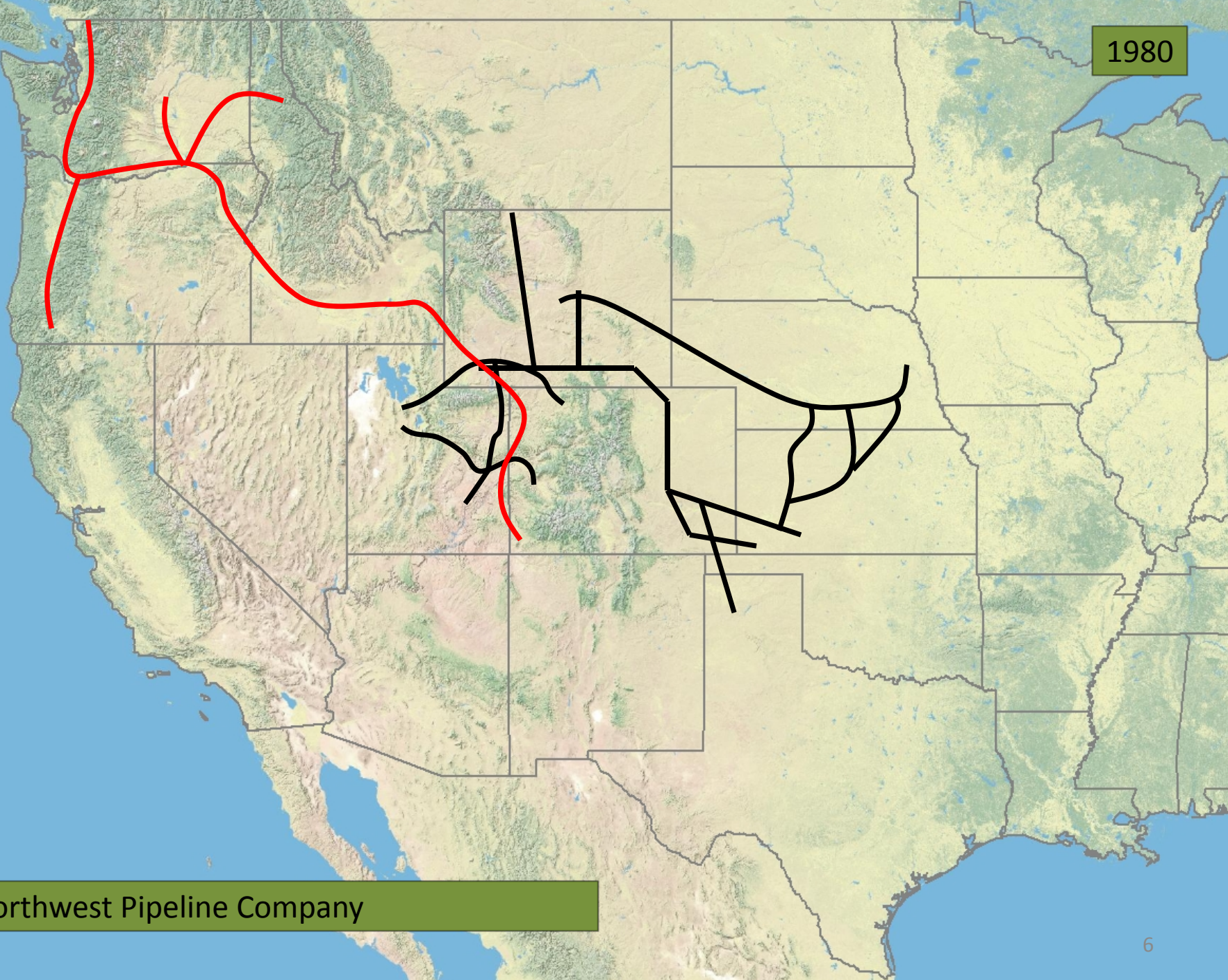
Kinder Morgan Interstate Gas Transmission (KMIGT)





1980

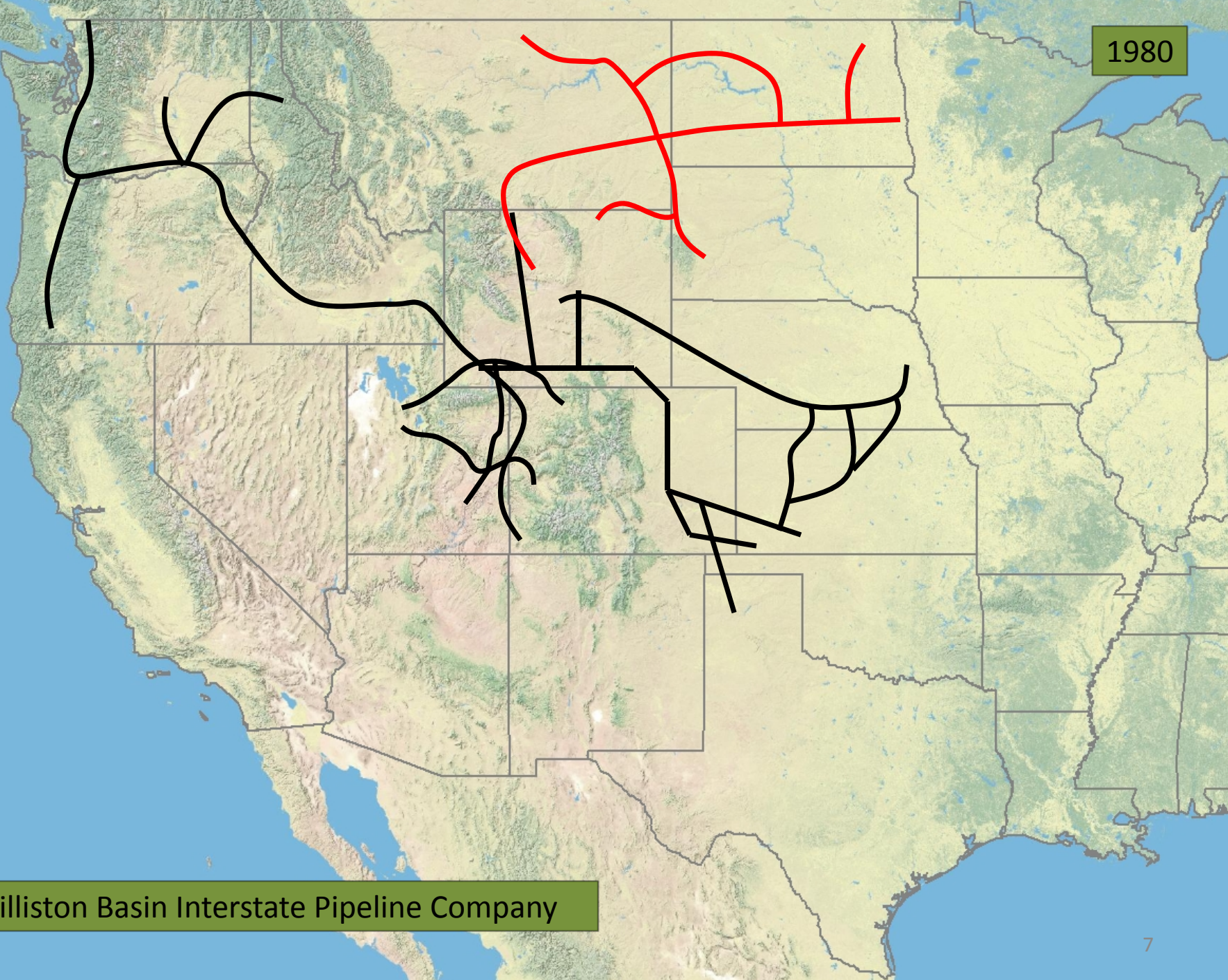
Northwest Pipeline Company





1980

Williston Basin Interstate Pipeline Company



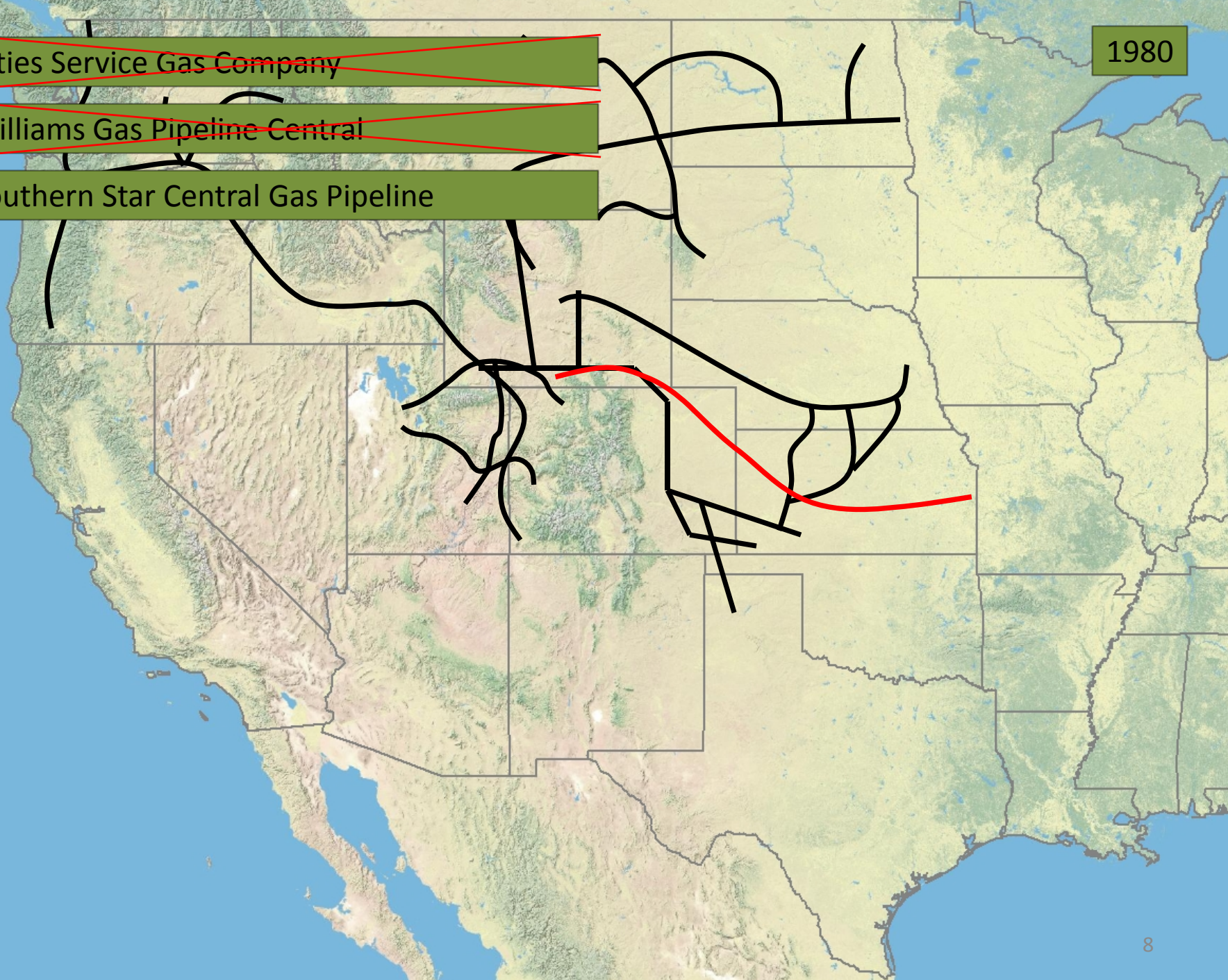


~~Cities Service Gas Company~~

~~Williams Gas Pipeline Central~~

Southern Star Central Gas Pipeline

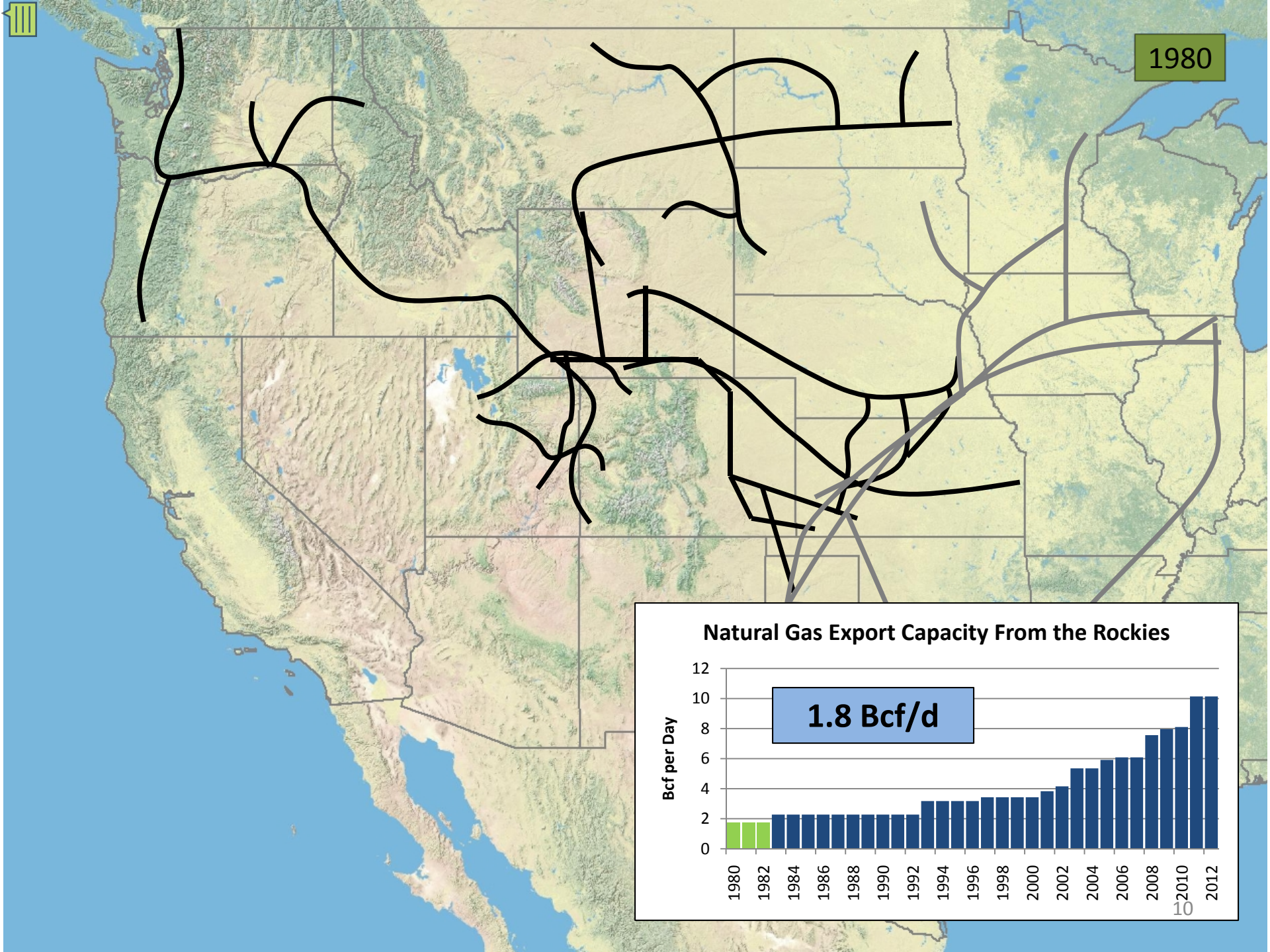
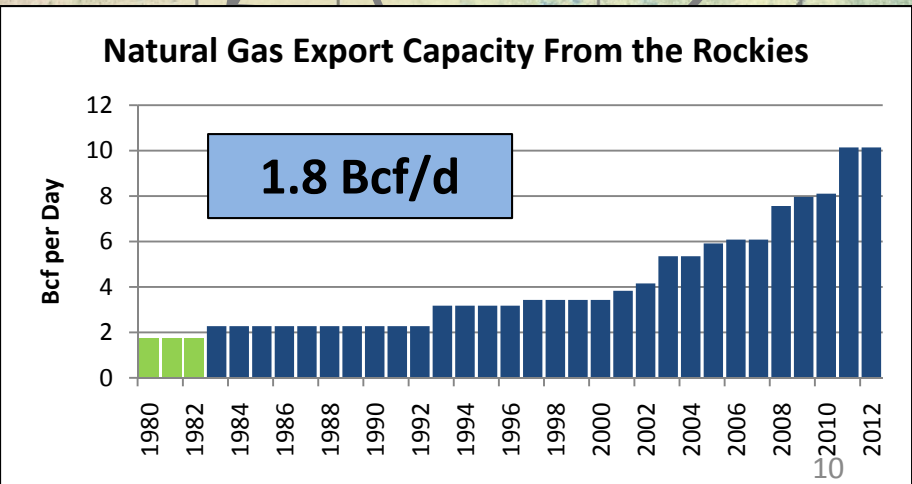
1980



1980

- Pipelines are in the merchant business
- All gas is system supply
- Dedications to interstate commerce for interstates
- Prices in interstate commerce are regulated
- No NYMEX, no index prices, no differential

1980

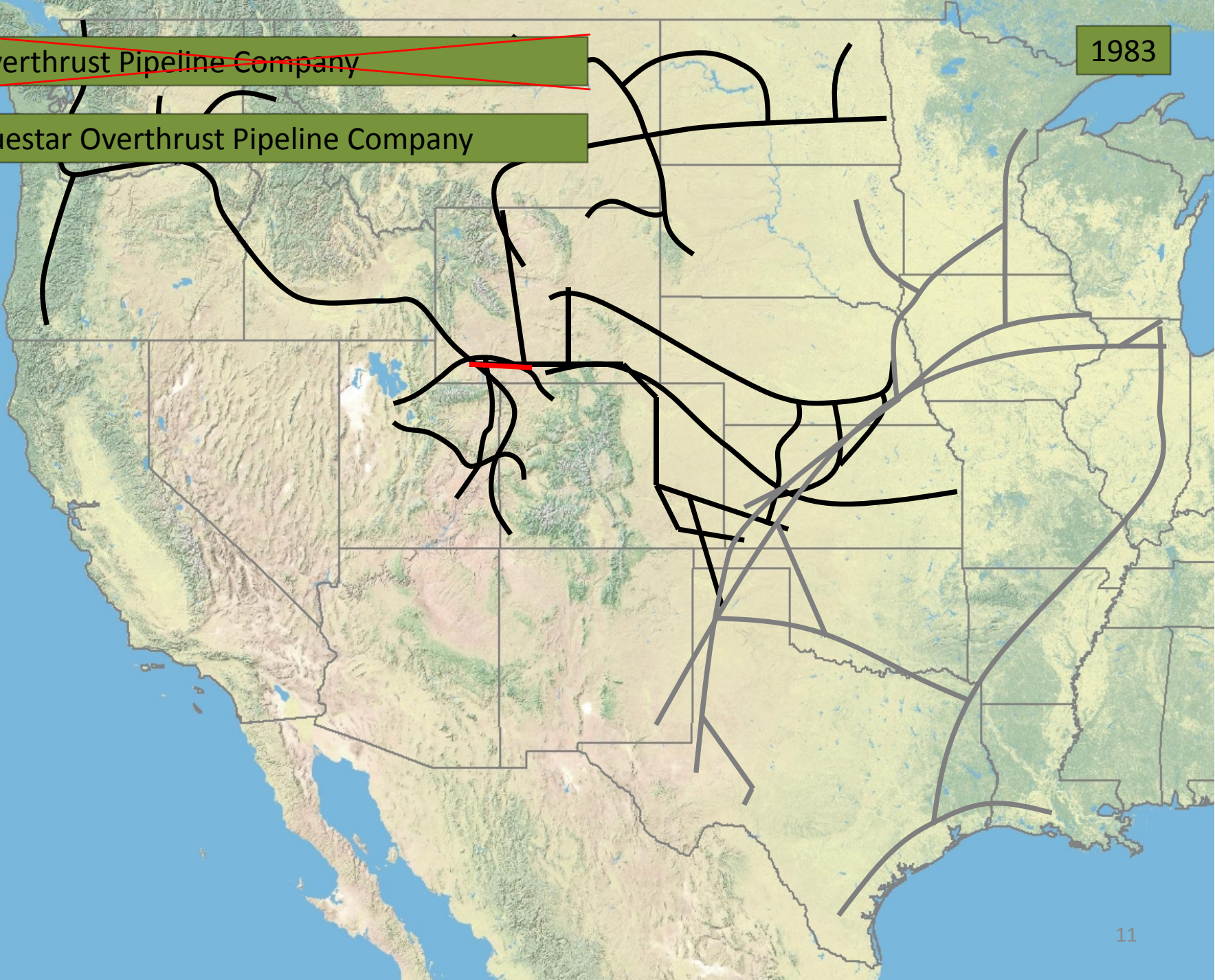




~~Overthrust Pipeline Company~~

Questar Overthrust Pipeline Company

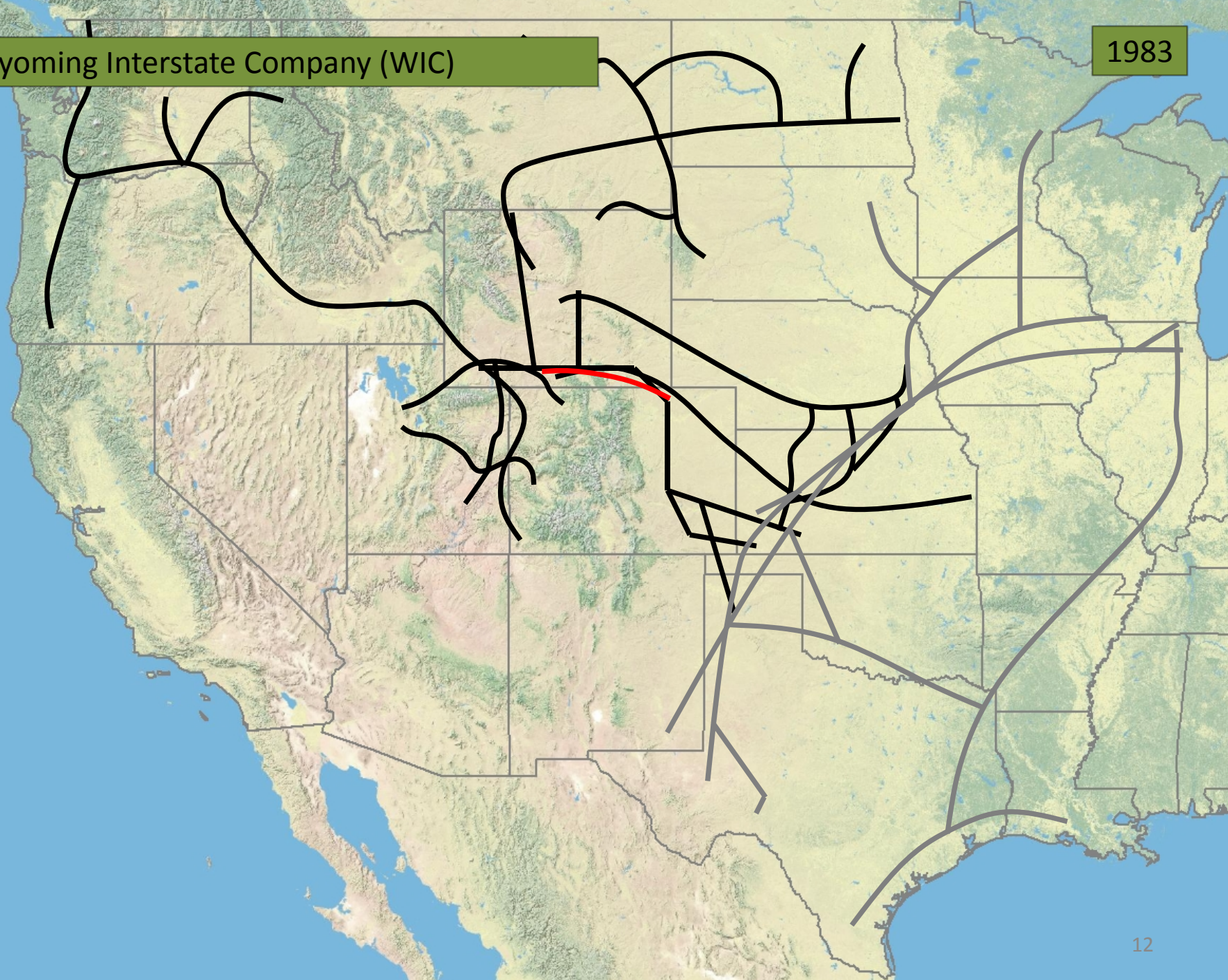
1983





Wyoming Interstate Company (WIC)

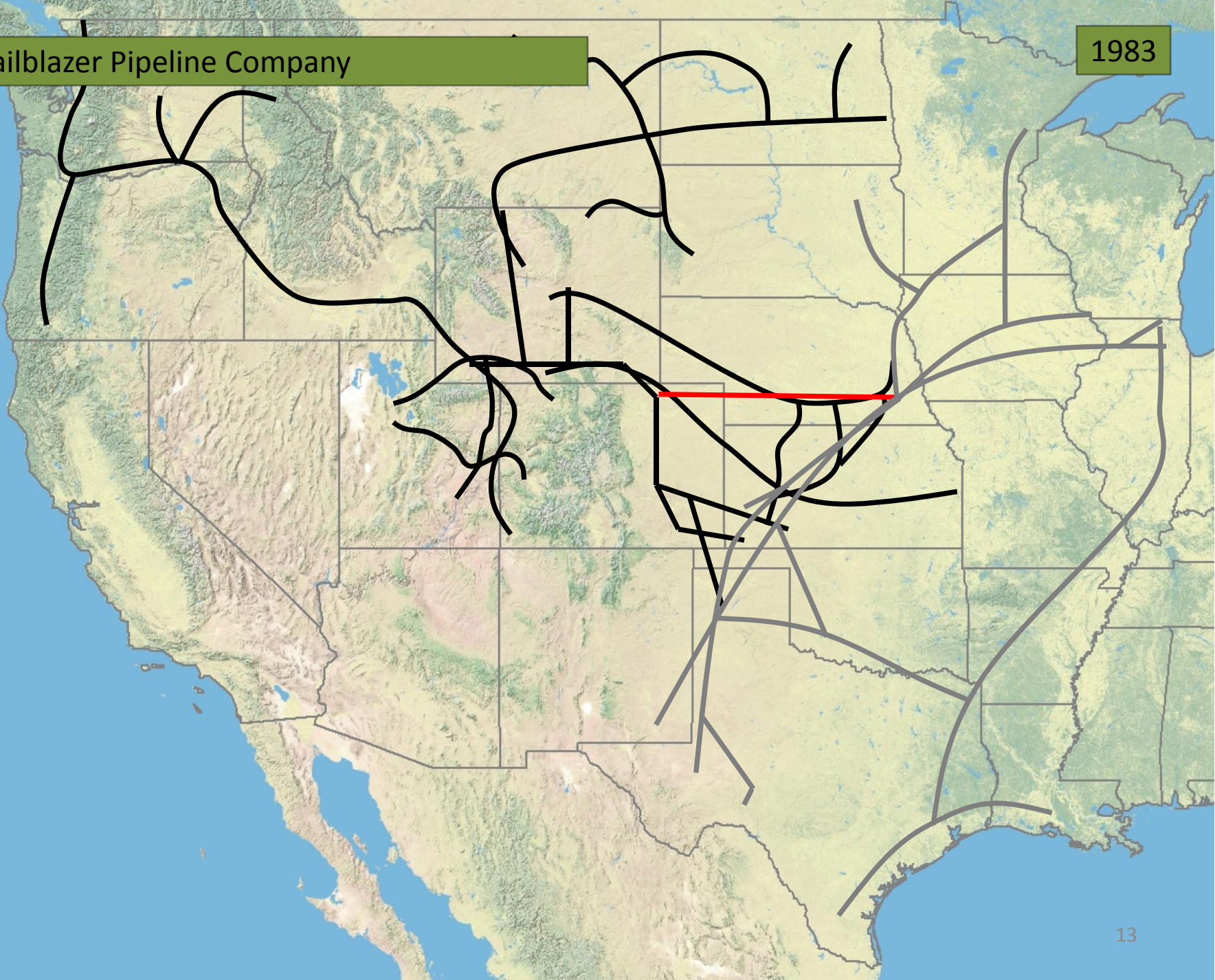
1983





Trailblazer Pipeline Company

1983



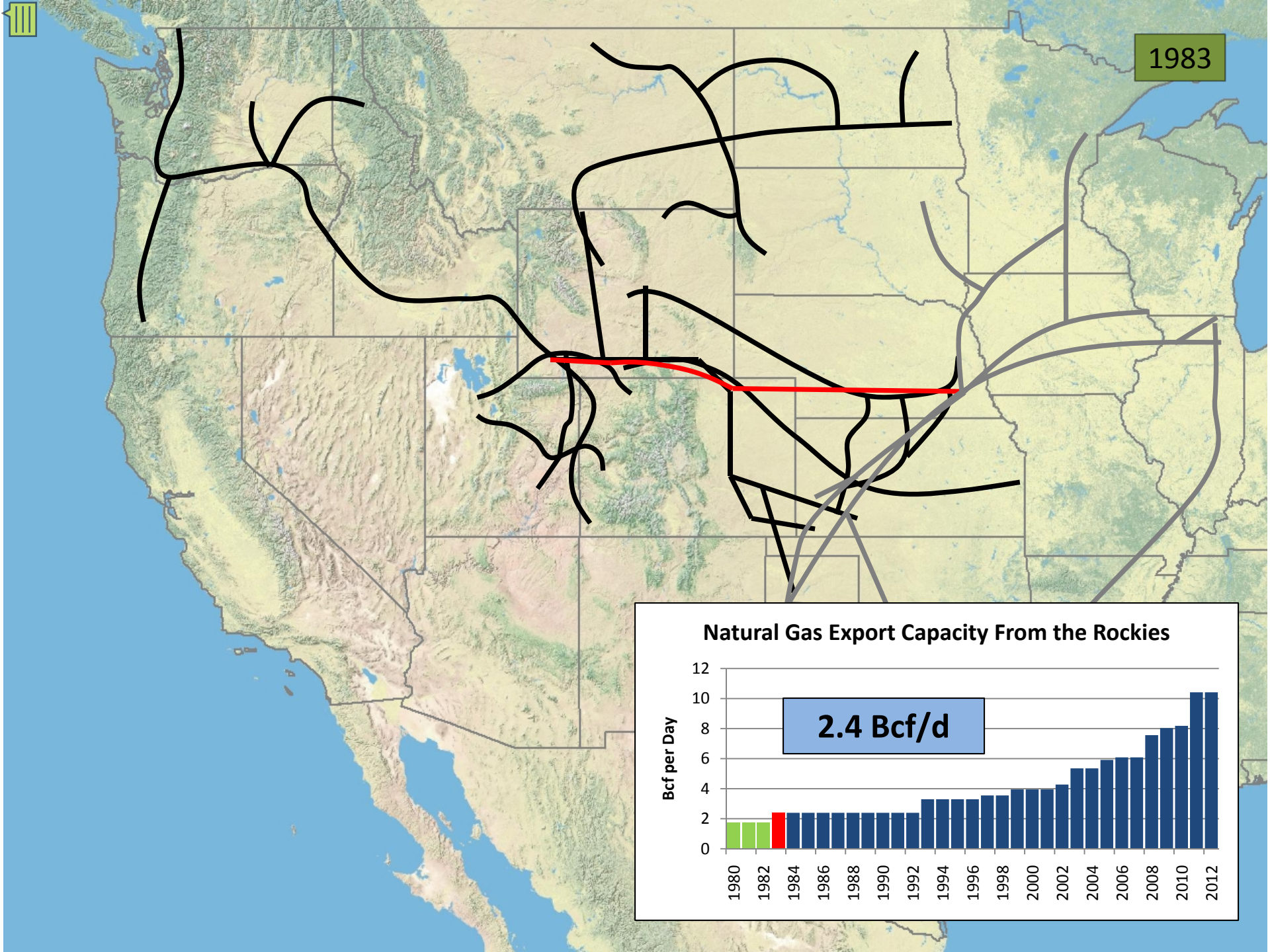
A map of the United States showing a network of gas pipelines. A prominent red line runs east-west across the Rocky Mountain region, representing the Trailblazer Project. Other pipelines are shown in black and grey. The map includes state boundaries and topographical features.

Trailblazer Project

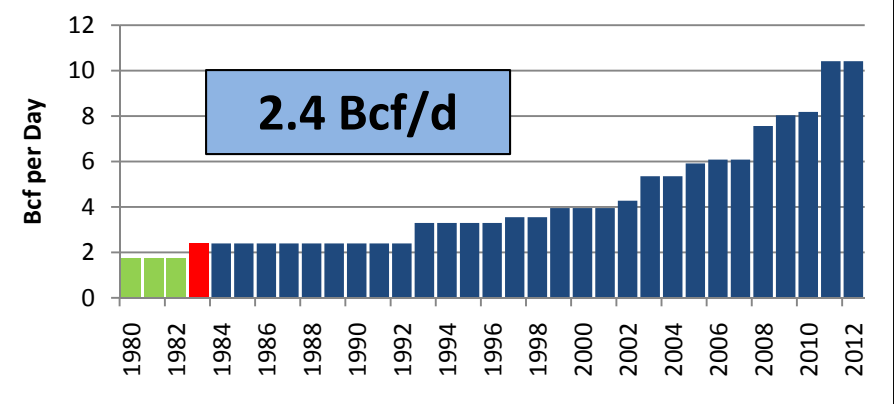
1983

- Overthrust, WIC, Trailblazer Integrated System
- Last merchant pipeline system built in Rockies
- Owners include NGPL, NNG, Tennessee Gas and Columbia Gas

1983



Natural Gas Export Capacity From the Rockies



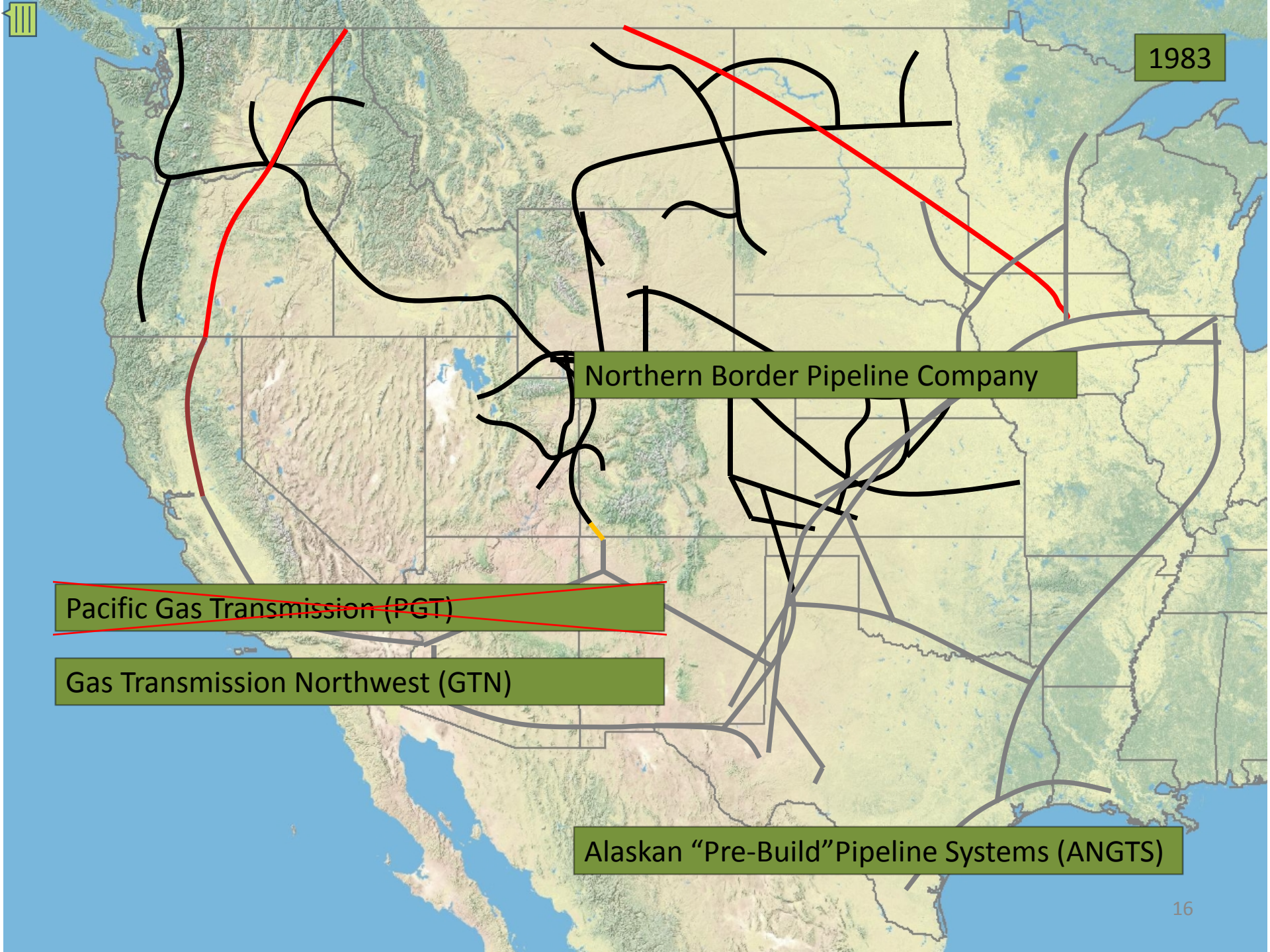
1983

Northern Border Pipeline Company

~~Pacific Gas Transmission (PGT)~~

Gas Transmission Northwest (GTN)

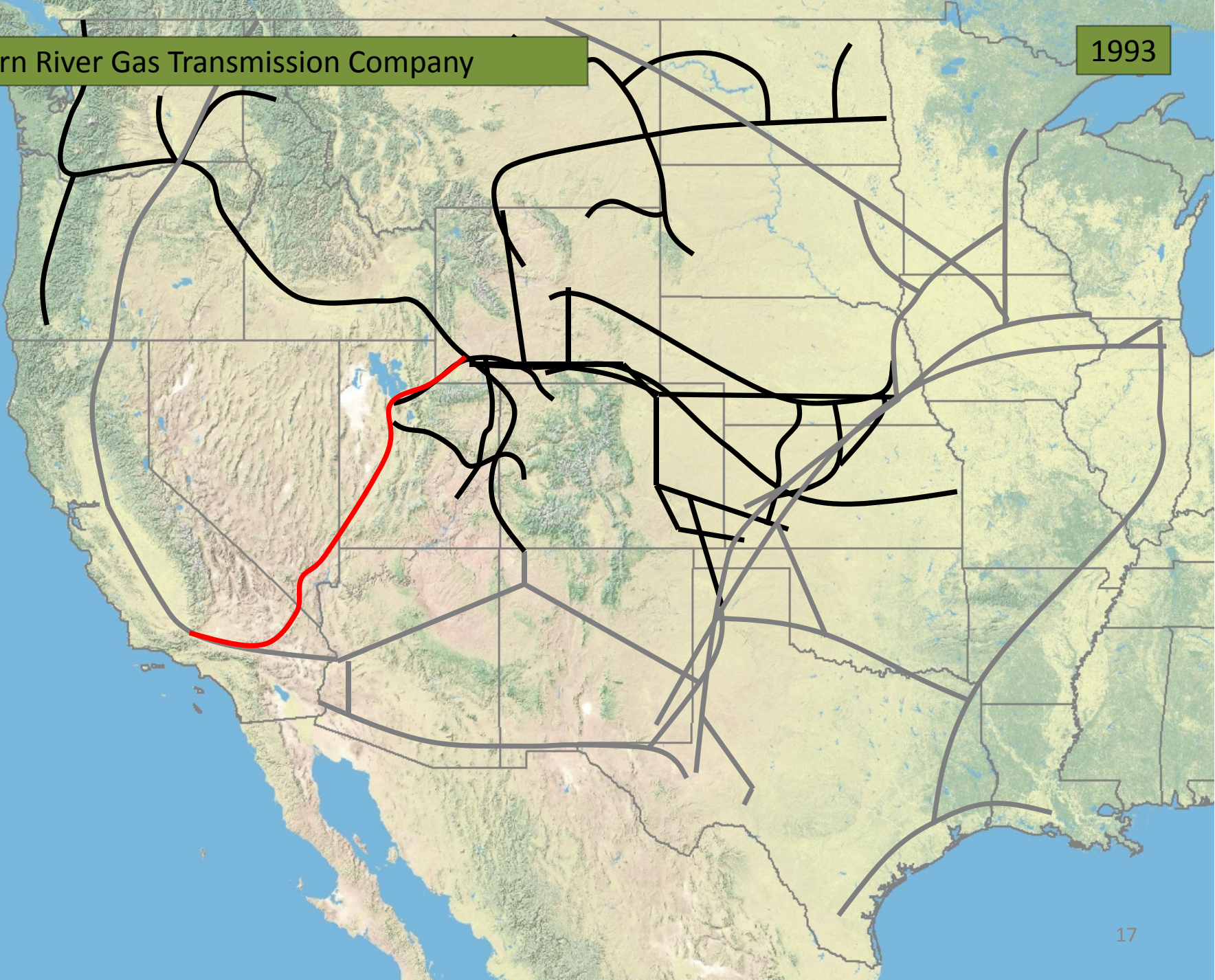
Alaskan "Pre-Build" Pipeline Systems (ANGTS)





Kern River Gas Transmission Company

1993





1993

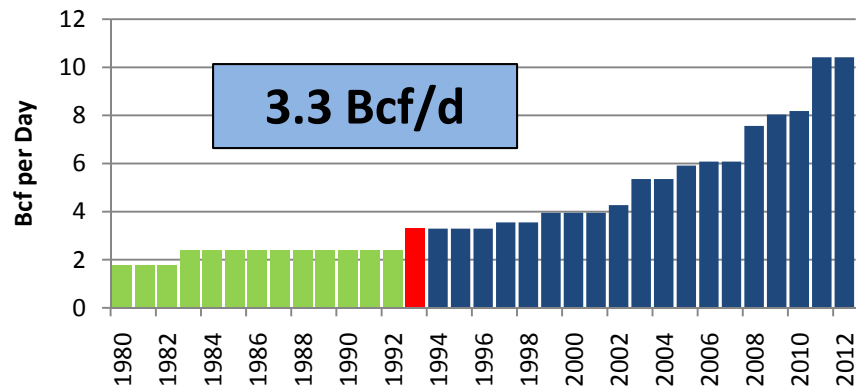
Altamont Gas Transmission Company



Kern River Gas Transmission Company

1993

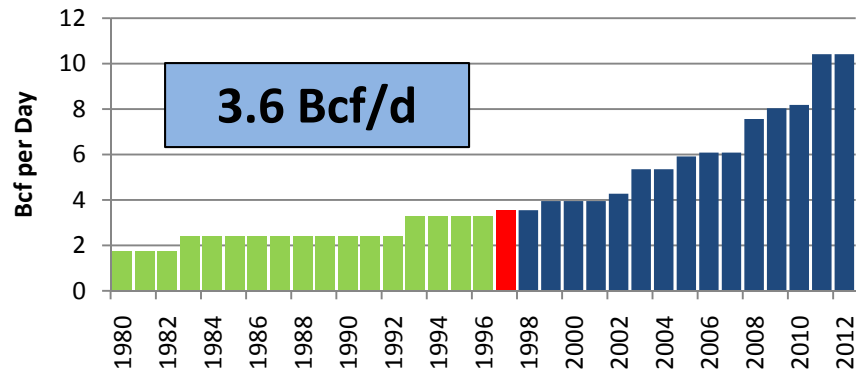
Natural Gas Export Capacity From the Rockies



Pony Express Pipeline (part of KMITG)

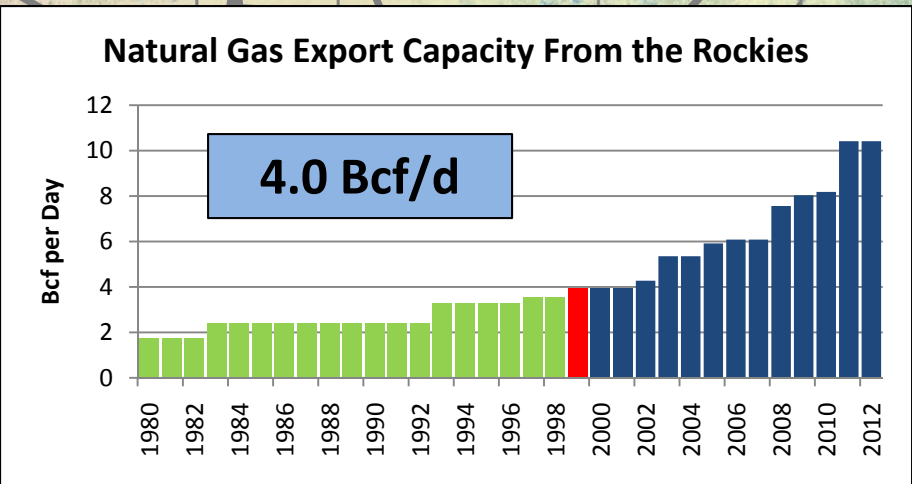
1997

Natural Gas Export Capacity From the Rockies



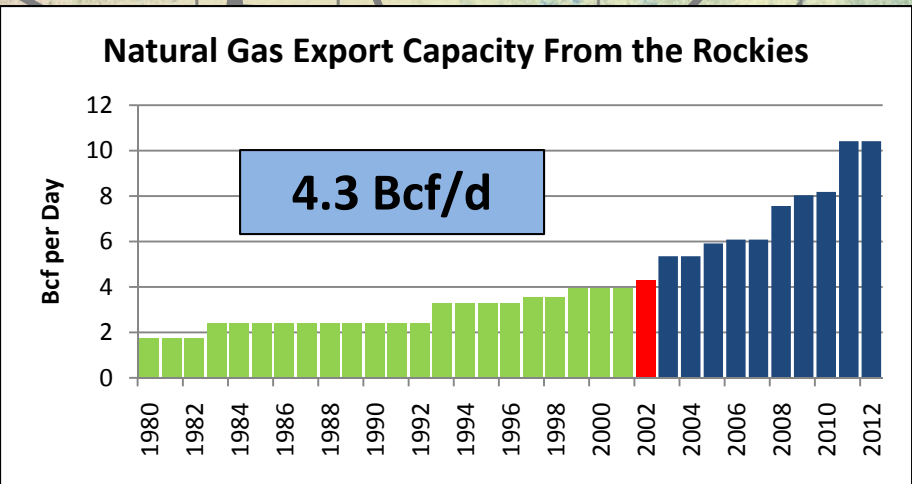
TransColorado Gas Transmission Company

1999



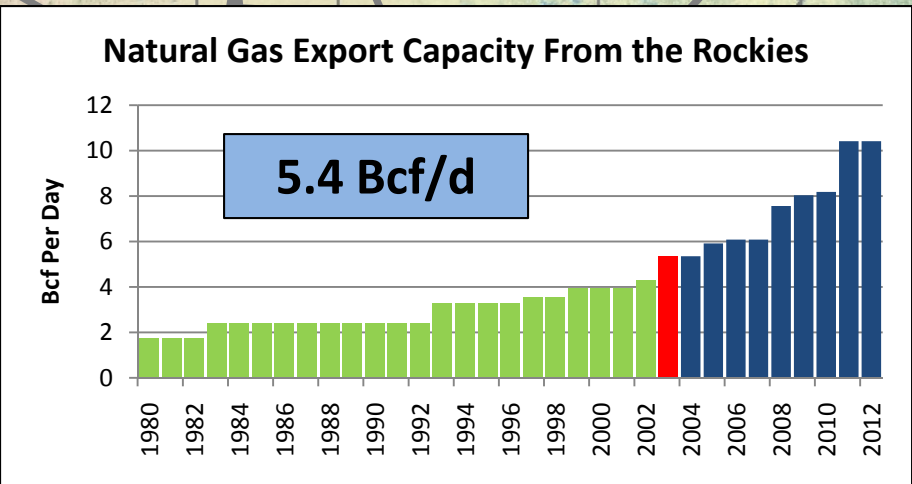
Trailblazer Expansion

2002



Kern River Loop and WBI Grasslands Project

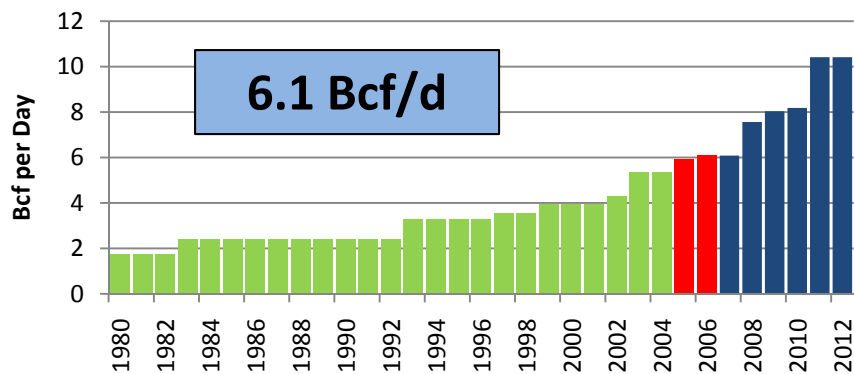
2003



Cheyenne Plains Gas Pipeline Company

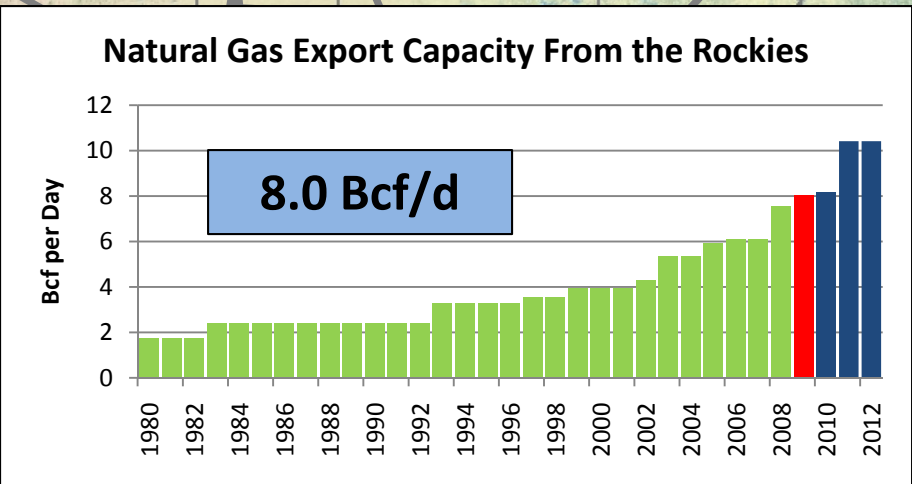
2006

Natural Gas Export Capacity From the Rockies



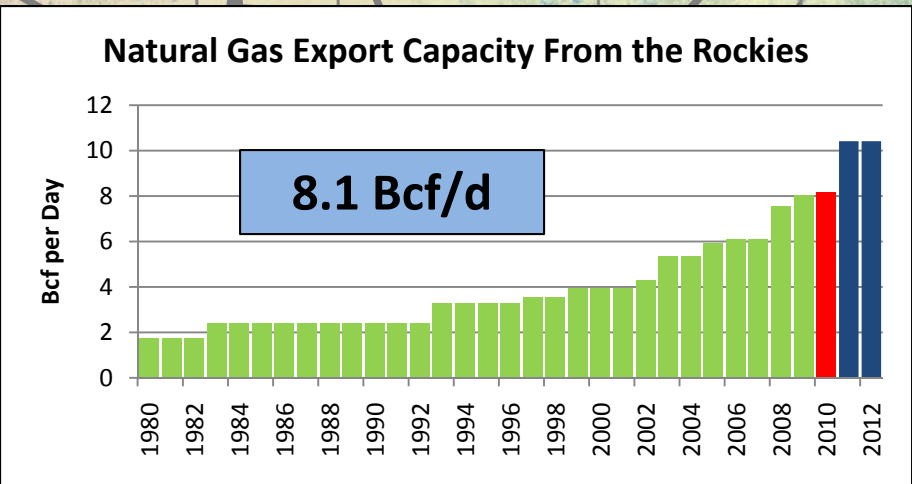
Rockies Express and Grasslands II

2009



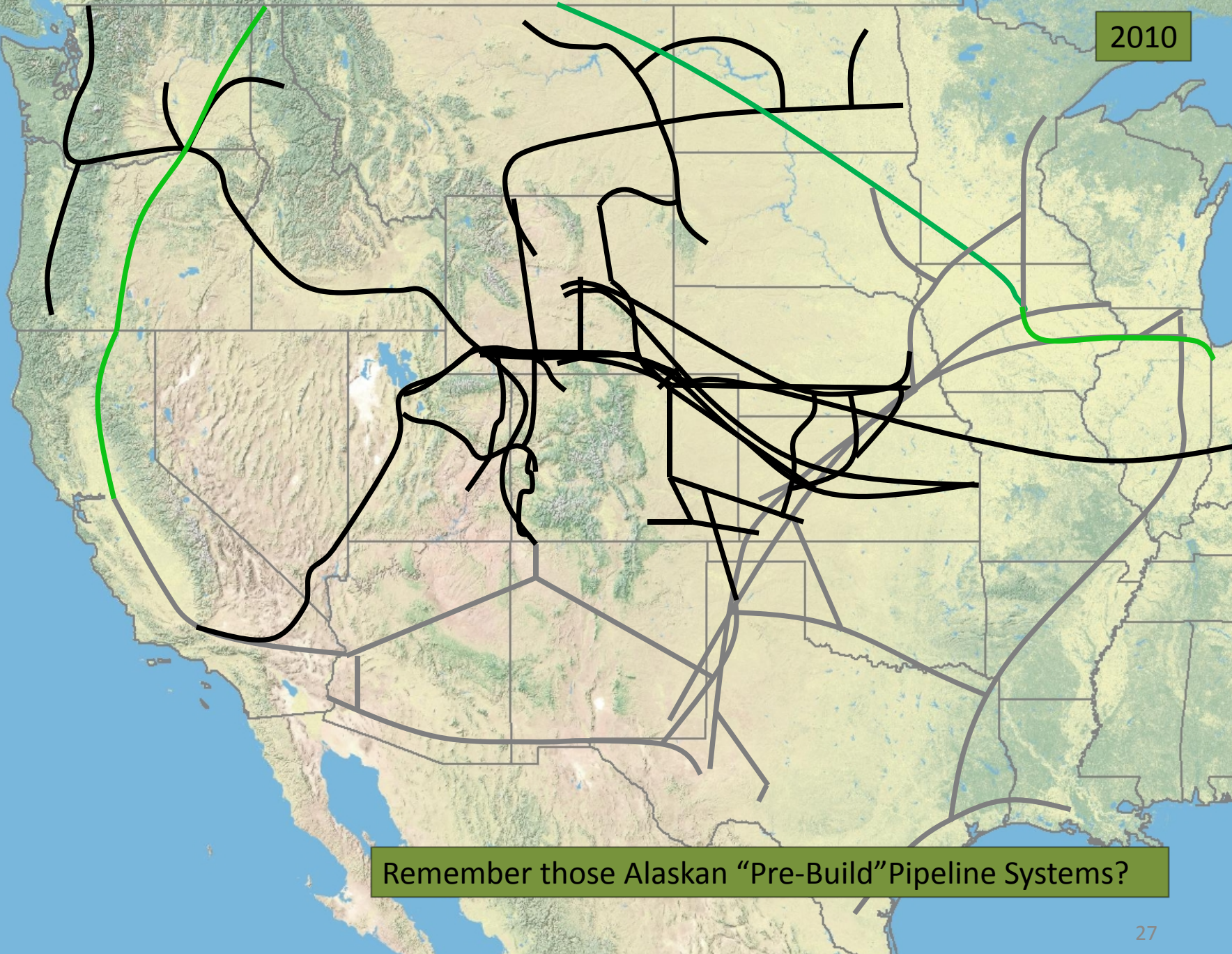
Kern River Expansion

2010





2010

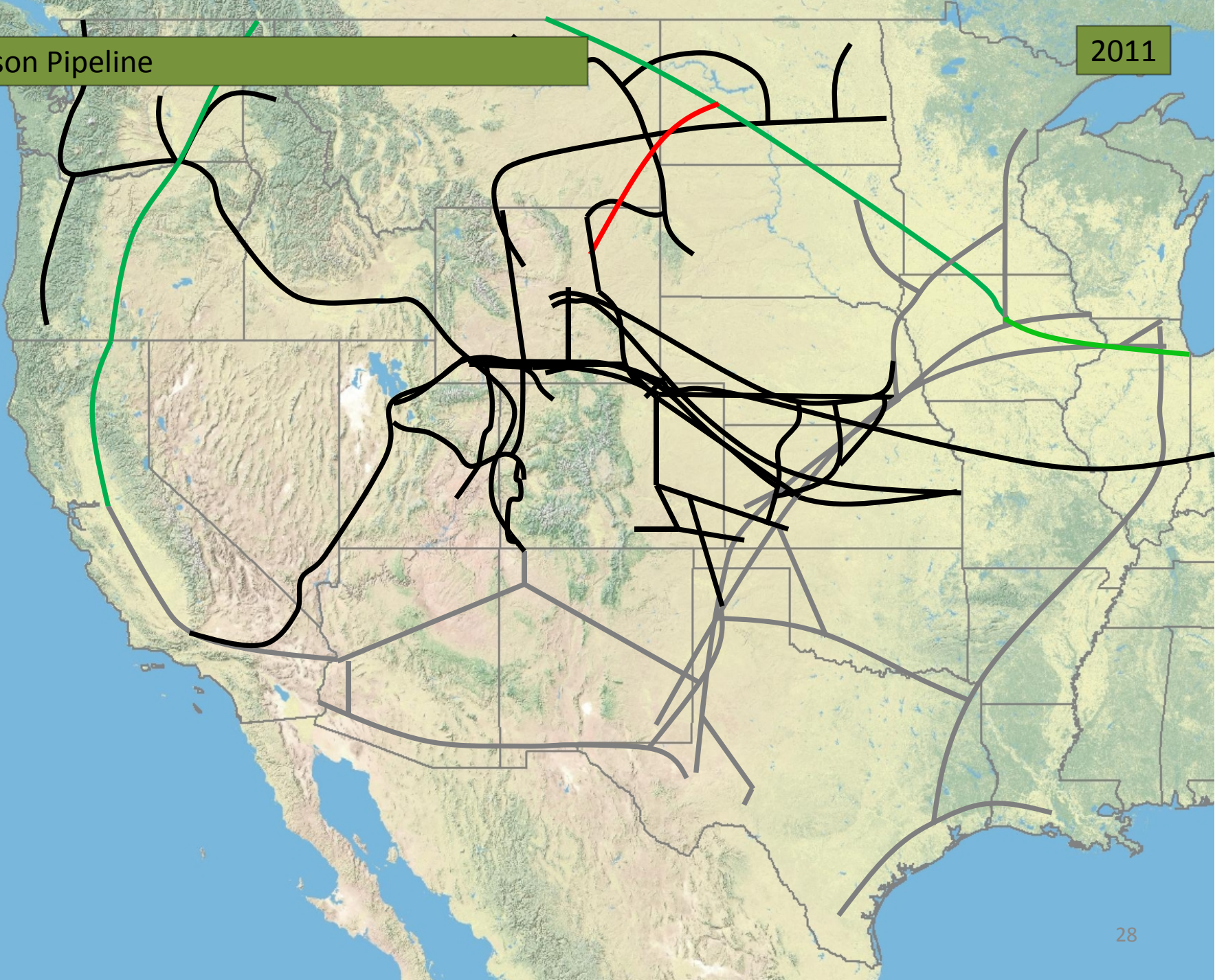


Remember those Alaskan "Pre-Build" Pipeline Systems?



Bison Pipeline

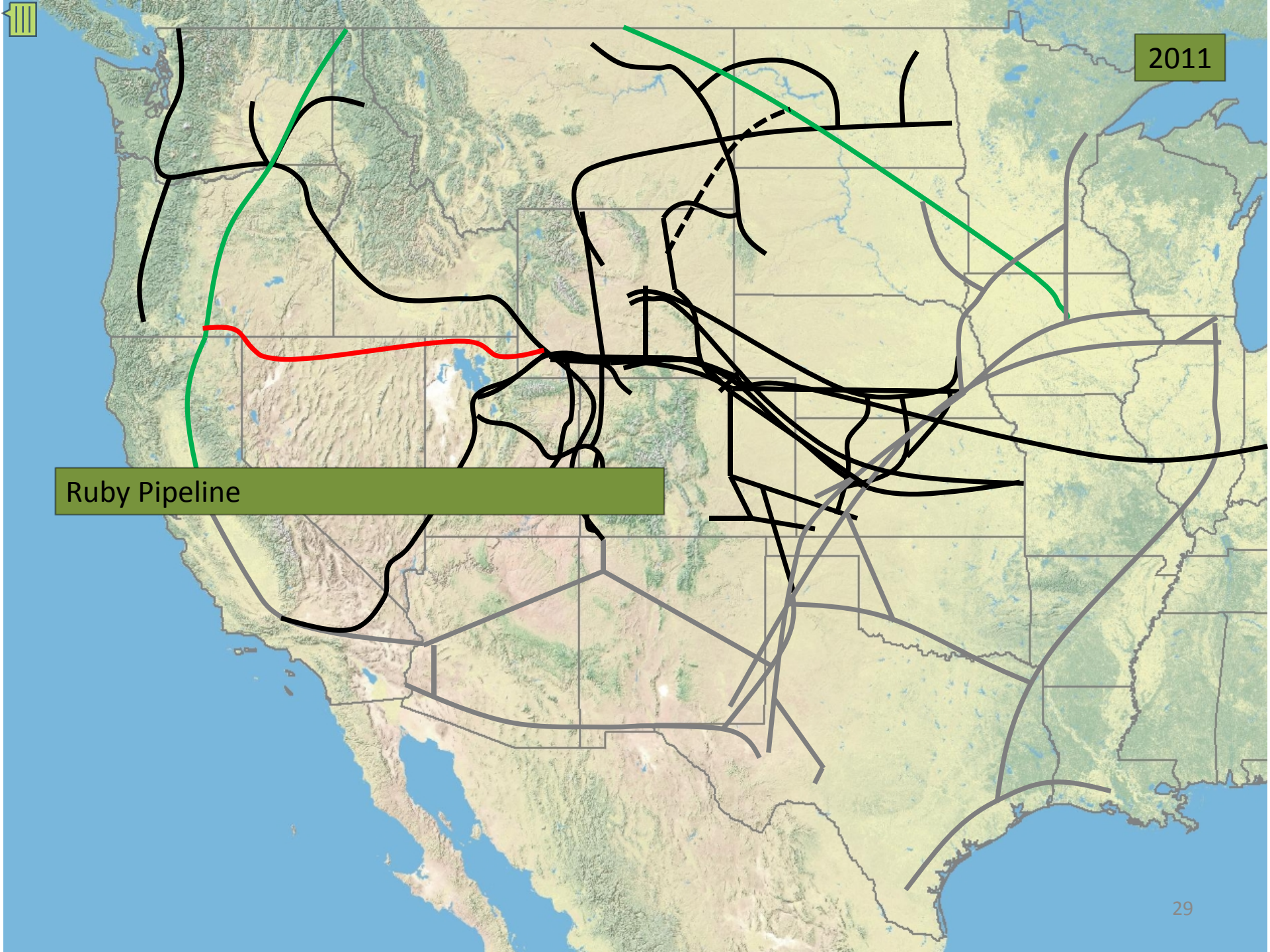
2011





2011

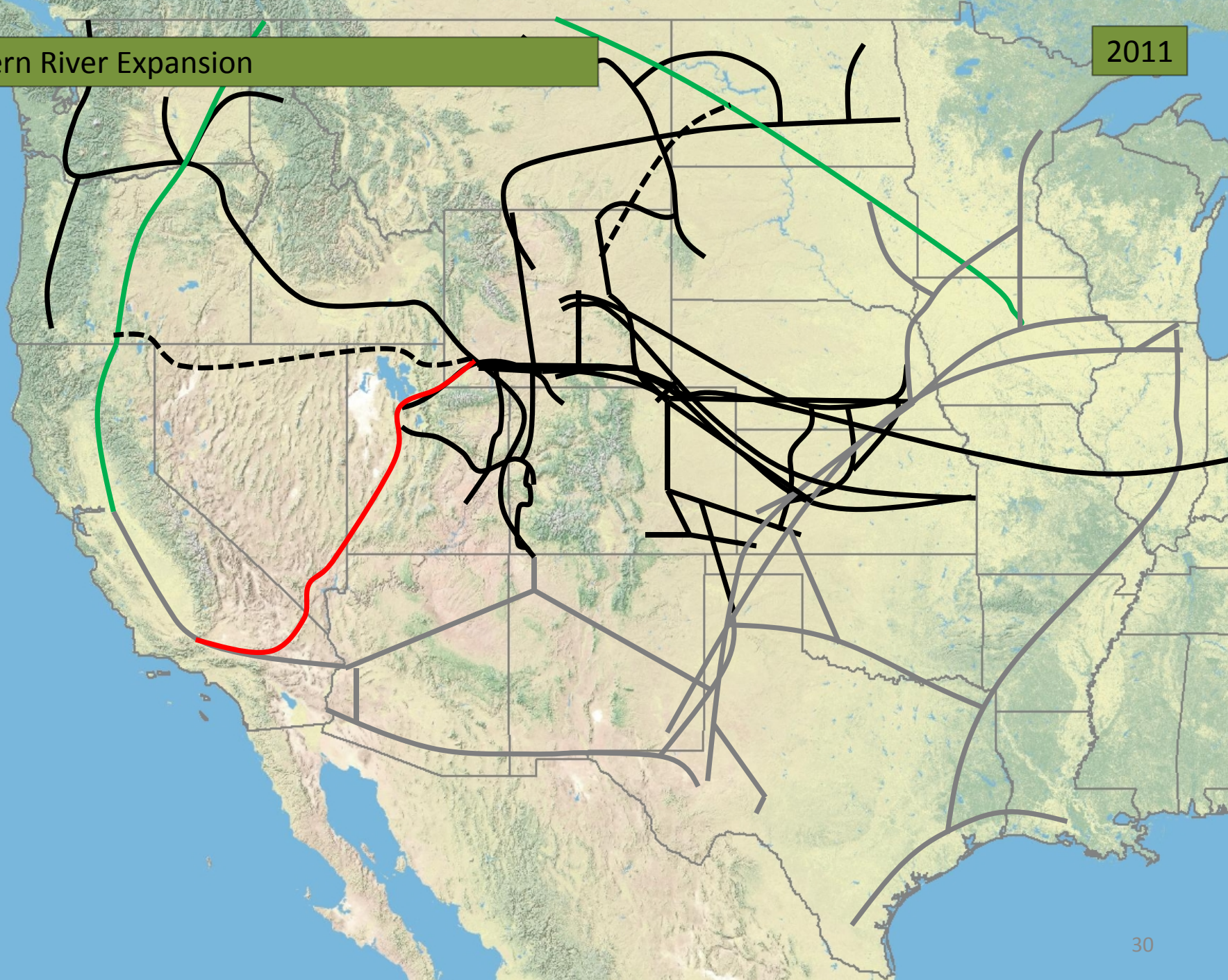
Ruby Pipeline



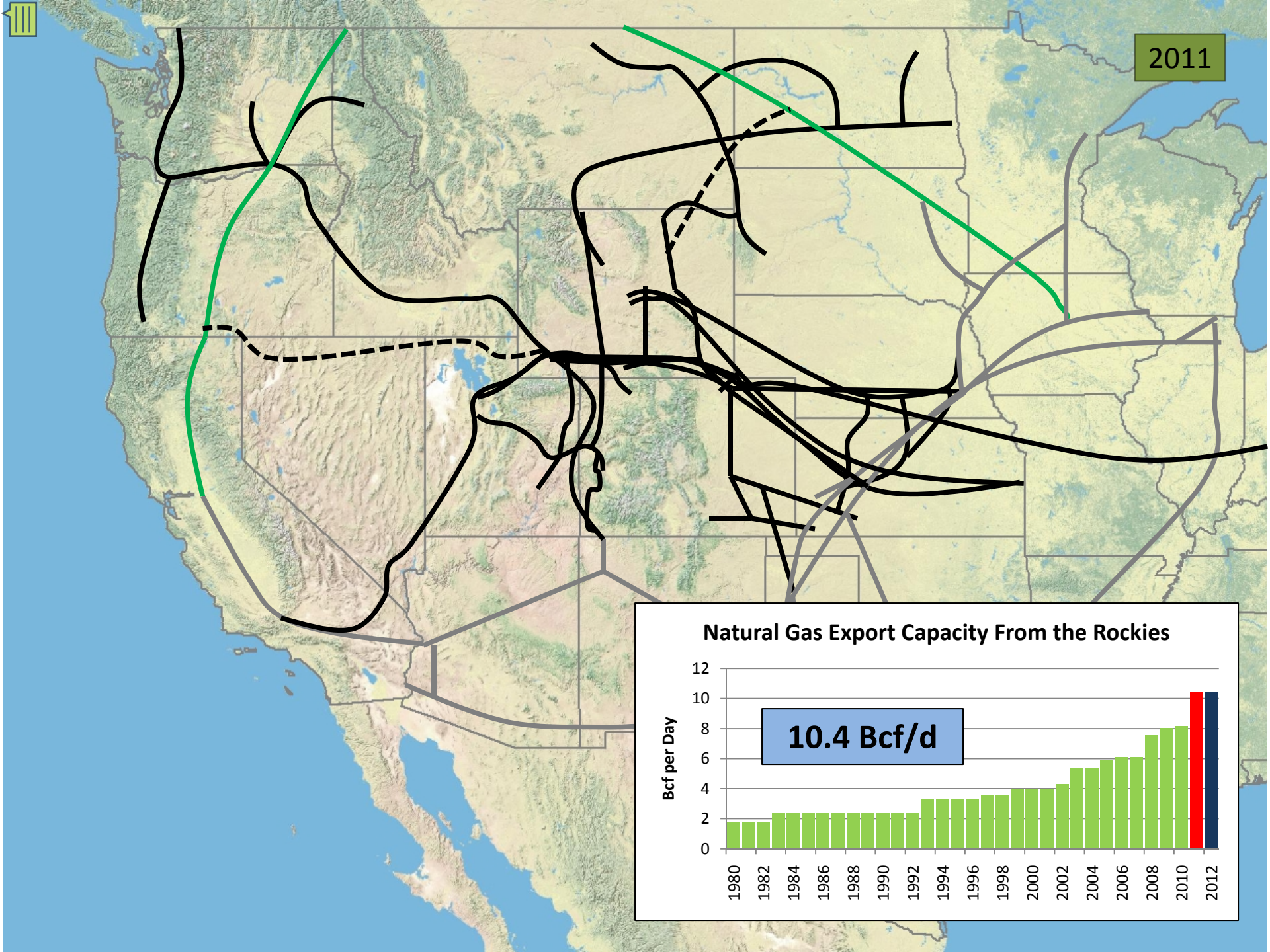
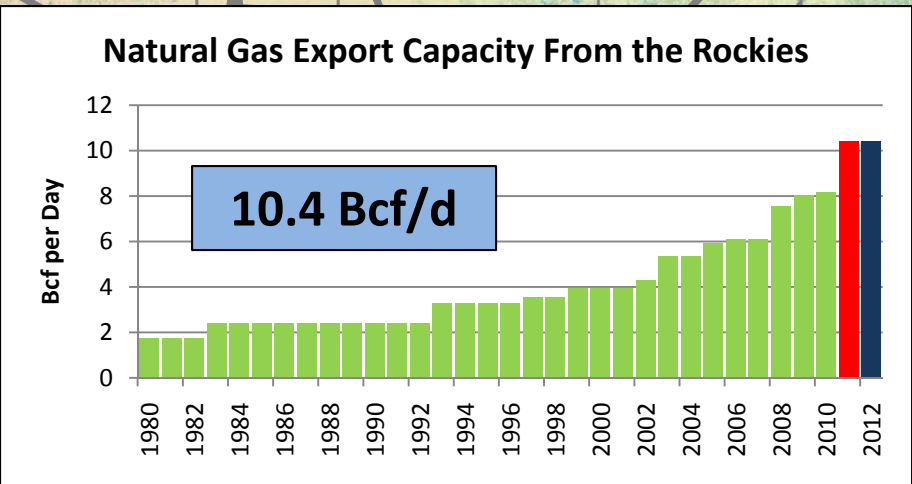


Kern River Expansion

2011



2011





The State and the citizens of Wyoming have the equivalent economic interest in natural gas markets as would a 1 billion cubic foot per day producer of natural gas.